

ASPA

BESPOKE SPA DESIGN & CONSULTANCY
FOR THE LUXURY HOTEL AND WELLNESS SECTORS
SINCE 1983

EXCEPTIONAL DETAILING UNDERPINS
OUR SUCCESSFUL SPA CONCEPTS



each and every spa design is unique

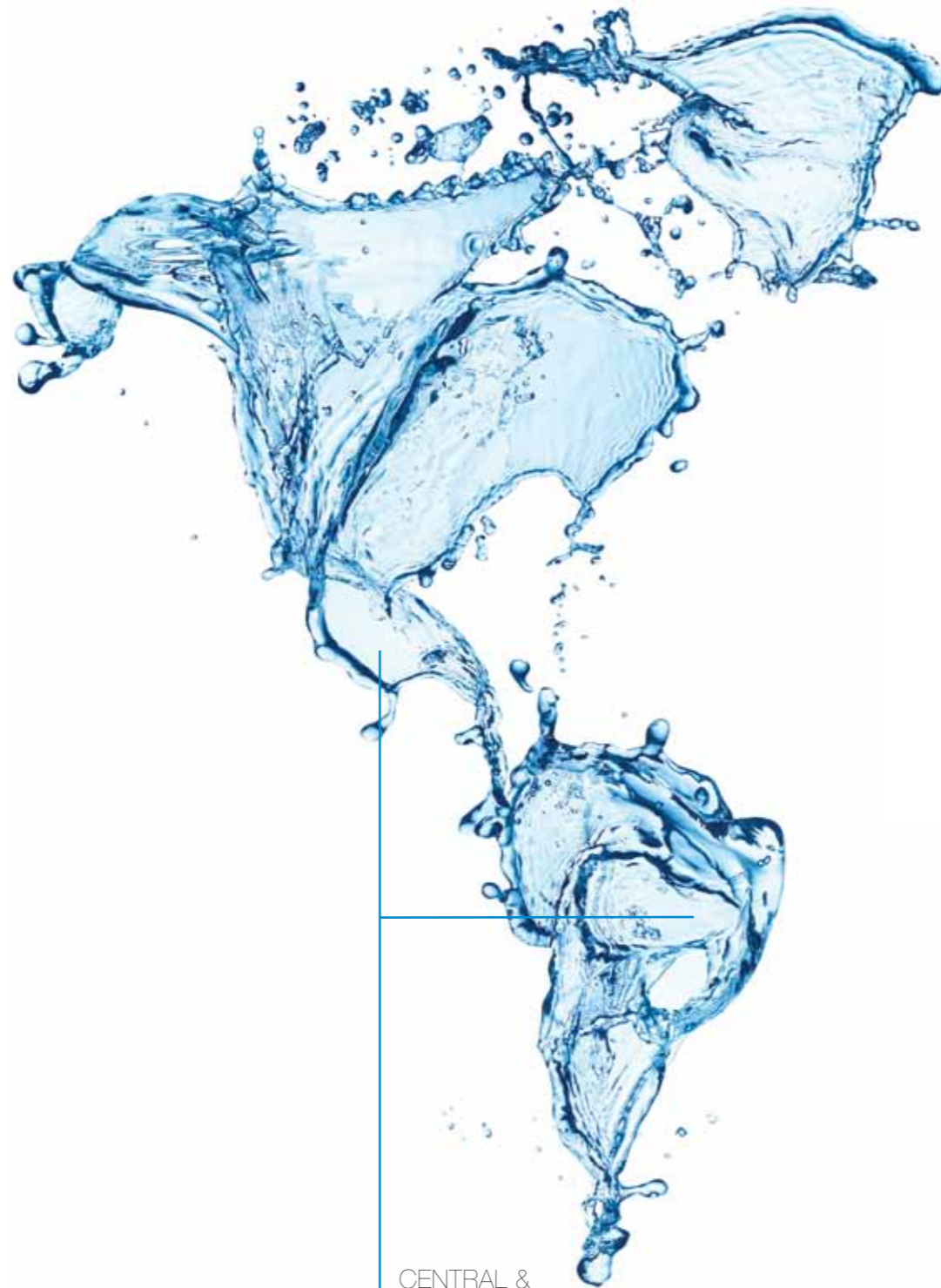
We provide the specialist knowledge and expertise you need to plan, design, and operate a successful spa.

Planning the success of your spa	5
Superior experiences	6
Assembled in Europe, installed locally	8
Cutting edge technology, operational efficiency	12
Preventative maintenance	16
Our projects	18
Our Services	36
Contact details	40

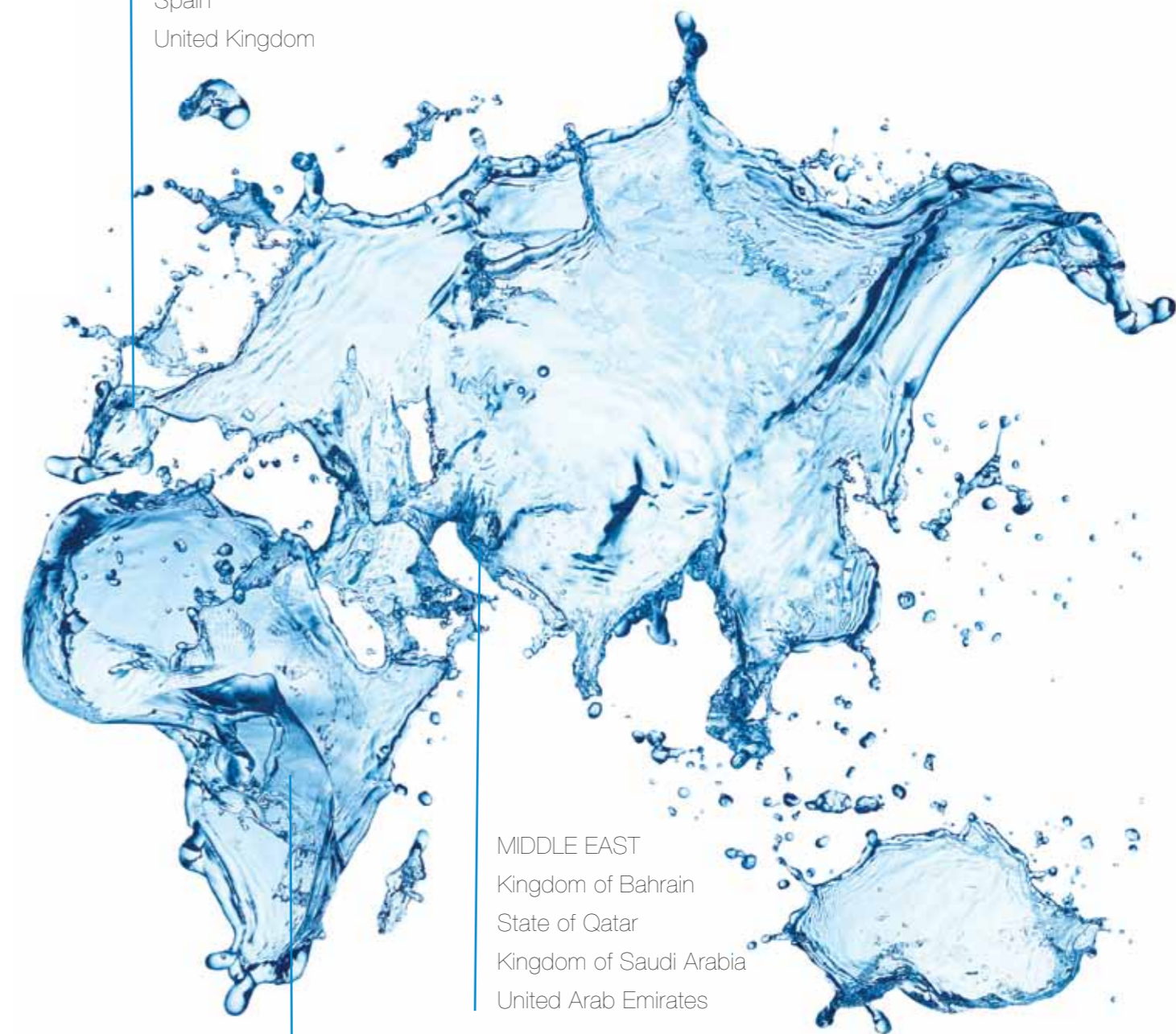
completed projects

Over 30 years' spa development experience, market knowledge and operational know-how

Clients



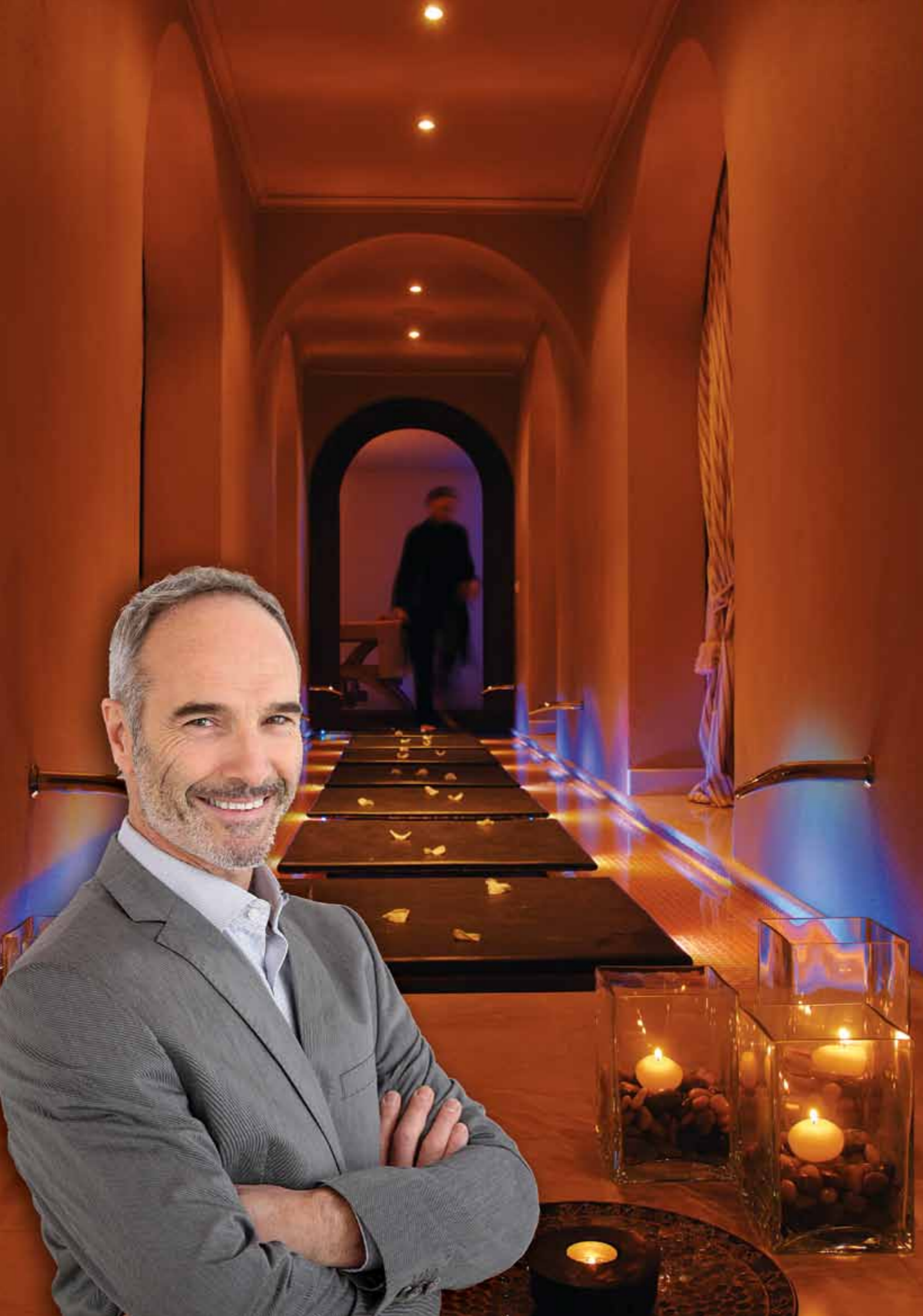
CENTRAL &
SOUTH AMERICA
Mexico
Brazil



EUROPE
Madeira – Funchal
Portugal
Spain
United Kingdom

AFRICA
Republic of Angola
Republic of Cabo Verde
Kingdom of Morocco
State of Libya
Republic of Mozambique
Republic of Tunisia

MIDDLE EAST
Kingdom of Bahrain
State of Qatar
Kingdom of Saudi Arabia
United Arab Emirates



planning the success of your spa

Creating the perfect spa experience and generating profitable income in today's highly competitive market is a real challenge. You need to make the right decisions from the beginning.

With over 30 years' luxury spa development experience and solid operational know-how, we can help you to achieve superior results. And avoid costly errors. Our spa consultancy service helps hotel operators and developers to assess the market suitability and financial feasibility of new projects. Giving you realistic revenue and cost projections.

We also provide guidance and technical expertise to architects. Adding value to your project and the overall design.

[To request more information on this topic click here](#)



superior experiences

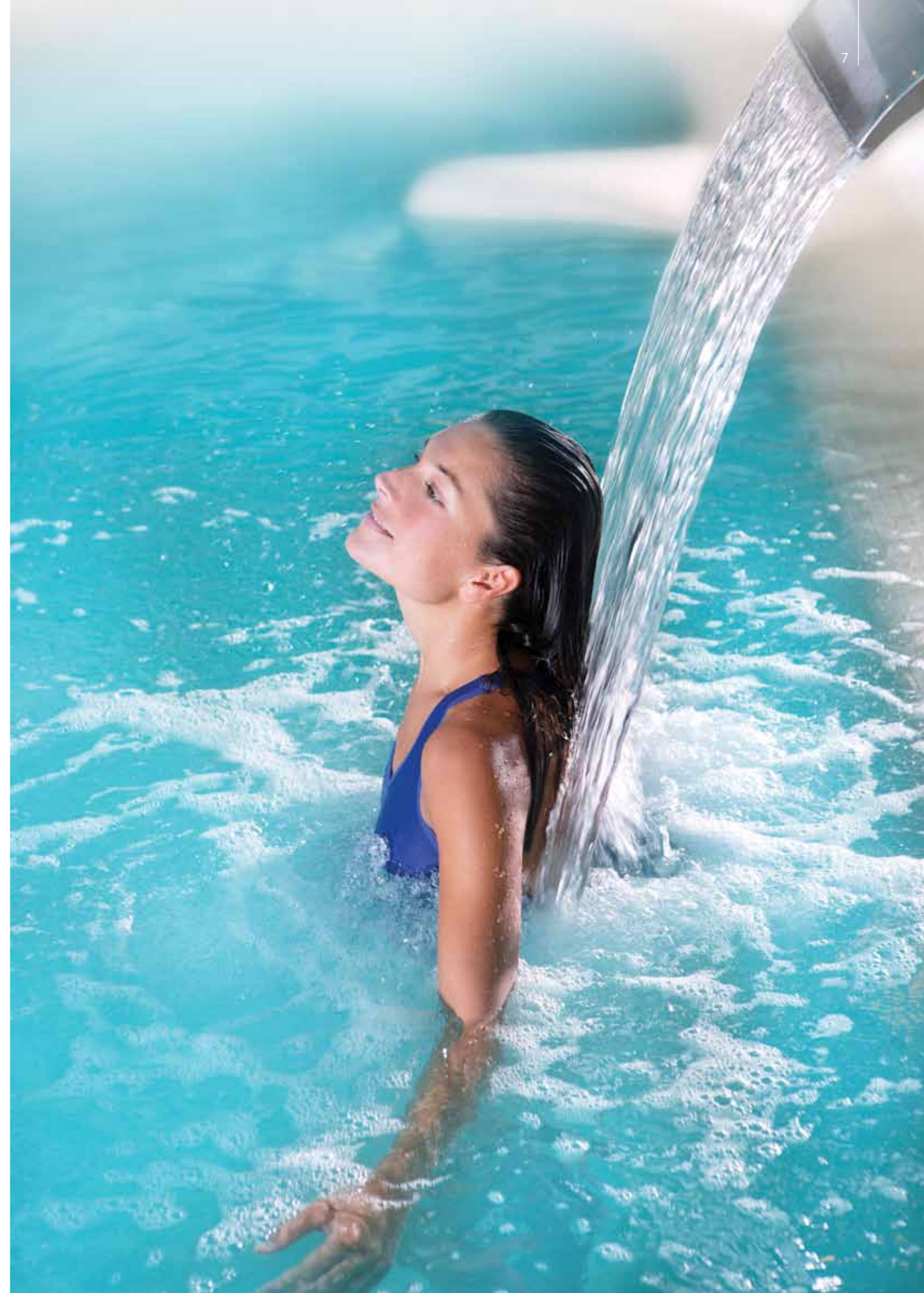
You need to be confident you are working with the best when you invest in a new spa. We believe we are one of the top three spa designers in the world. We work with the best: Hilton, Marriott, Sheraton, and many luxury boutique hotels. And our spas win awards. The chief reason? The exceptional amount of detailing and thought we put into the planning and design of our clients' spas.

Our bespoke concepts have a strong sense of place. Location, architecture, heritage, and local culture can each influence the spa experiences and treatments we create for you. Interior design, art, fashion, and medical practice may also play a part.

We also think about how your customers will enjoy your spa. Such as a choice of four aromas, instead of one. At the push of a button. Or illuminated controls for infusions. Or themed, shower aromas.

Furthermore, we think about how your staff will maintain your spa. Without disturbing your customers' tranquility. Our spa layouts include easily accessible technical rooms, away from your clients.

[To request more information on this topic click here](#)





assembled in europe, installed locally

You will want to be sure that things run smoothly during spa construction.

To identify potential problems early, we pre-assemble and test all equipment before shipping. Spa equipment. Hydro equipment. Thermal equipment. Treatment room equipment. Ancillary equipment. And if we need extra parts, we purchase them prior to shipment. This enables us to install your spa products on schedule and to budget. Using standard, local plumbing services.

In addition, we provide detailed mechanical, electrical, and plumbing drawings to assist your contractors.

To help you increase profitability and minimise ongoing labour costs, we automate your spa experiences as much as possible.

[To request more information on this topic click here](#)





Our spa designs use electronic technology to refresh, filter, and disinfect water automatically. And include a management controller for setting mood and lighting. Our designs also incorporate automatic temperature and pH controls for hydro and thermal equipment.

Further examples of the exceptional detailing we put into our spa designs. Your spa manager will receive alerts if any intervention is required.

[To request more information on this topic click here](#)

cutting edge technology, operational efficiency

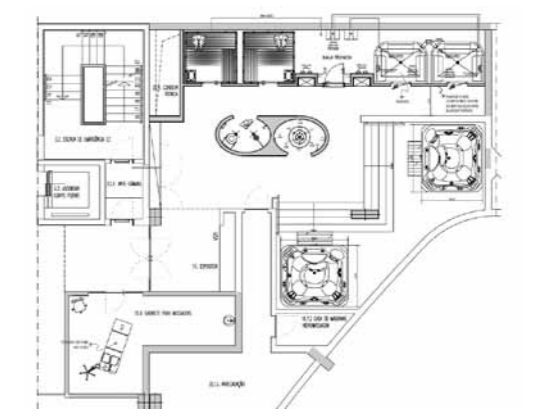
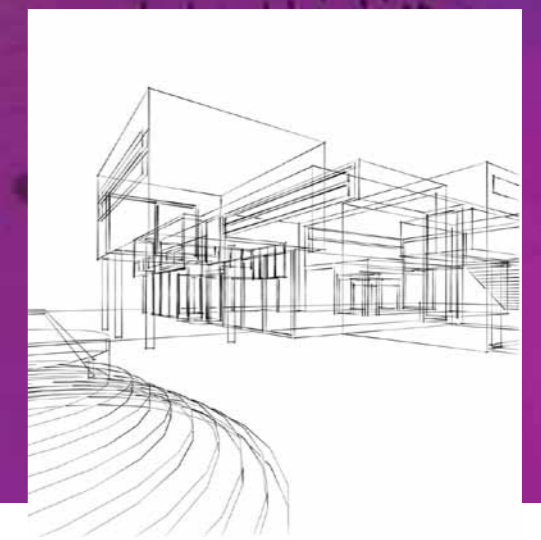
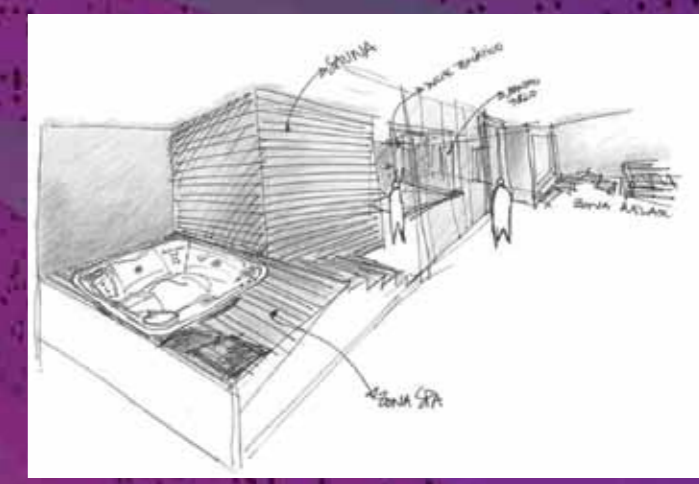
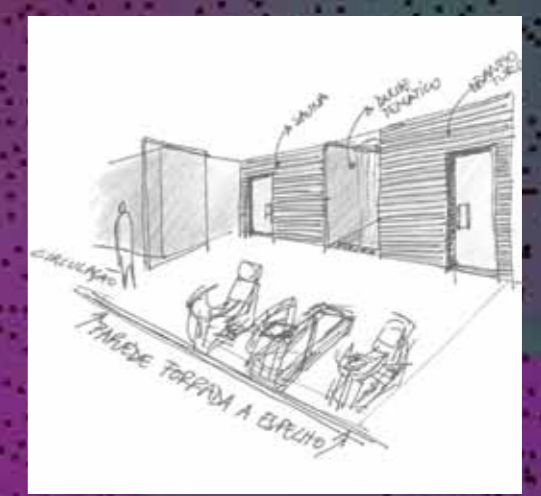
Minimising maintenance costs and ensuring operational efficiency are essential to the profitability of your spa. We use cutting edge technology to help you achieve these objectives.

Damage-resistant materials. Remote monitoring and control systems. Advances in water and energy conservation. All are examples of design detail that make a valuable contribution to your bottom line. And help you to manage your spa efficiently.

To discover the latest product developments and technological innovations we attend international trade exhibitions regularly. It is how we help our clients, and ourselves, to stay one step ahead.

Plus, of course, we have over 30 years' technical expertise and experience. Accumulated from the planning, design, and installation of more than 100 spas in over 15 countries.

[To request more information on this topic click here](#)





Whether your spa project occupies a 500 m² or 5,000 m² area, we can deliver robust operational systems. Incorporating the latest technology.

Spa projects include:

- ◆ Hotel & Resort Spas
- ◆ Hotel Spa & Wellness
- ◆ Boutique hotels
- ◆ Health Clubs & Wellness
- ◆ Medical spas
- ◆ Residential spas

In addition to spa design and equipment supply, we also offer post-opening services such as preventative maintenance, staff training, reviews, and audits.

[To request more information on this topic click here](#)



preventative maintenance

We design your spa for the long term to give you many trouble-free hours of operation. For example, we build redundancy into your spa solution. Such as double filters and pumps. This helps to minimise disruptions to your spa service.

If, and when, parts need replacing, our preventative maintenance service helps you to manage your spa. Minimising interruptions to your customers' relaxation. We fix and replace parts and equipment before they affect your income stream.

The added benefits of which are higher customer satisfaction and increased loyalty. It also reduces the time your staff spend dealing with complaints.

[To request more information on this topic click here](#)





Water is the
inspiration for this
Zen-like oasis
which has lush
garden views

CASE STUDY

Hilton Vilamoura

THE BRIEF

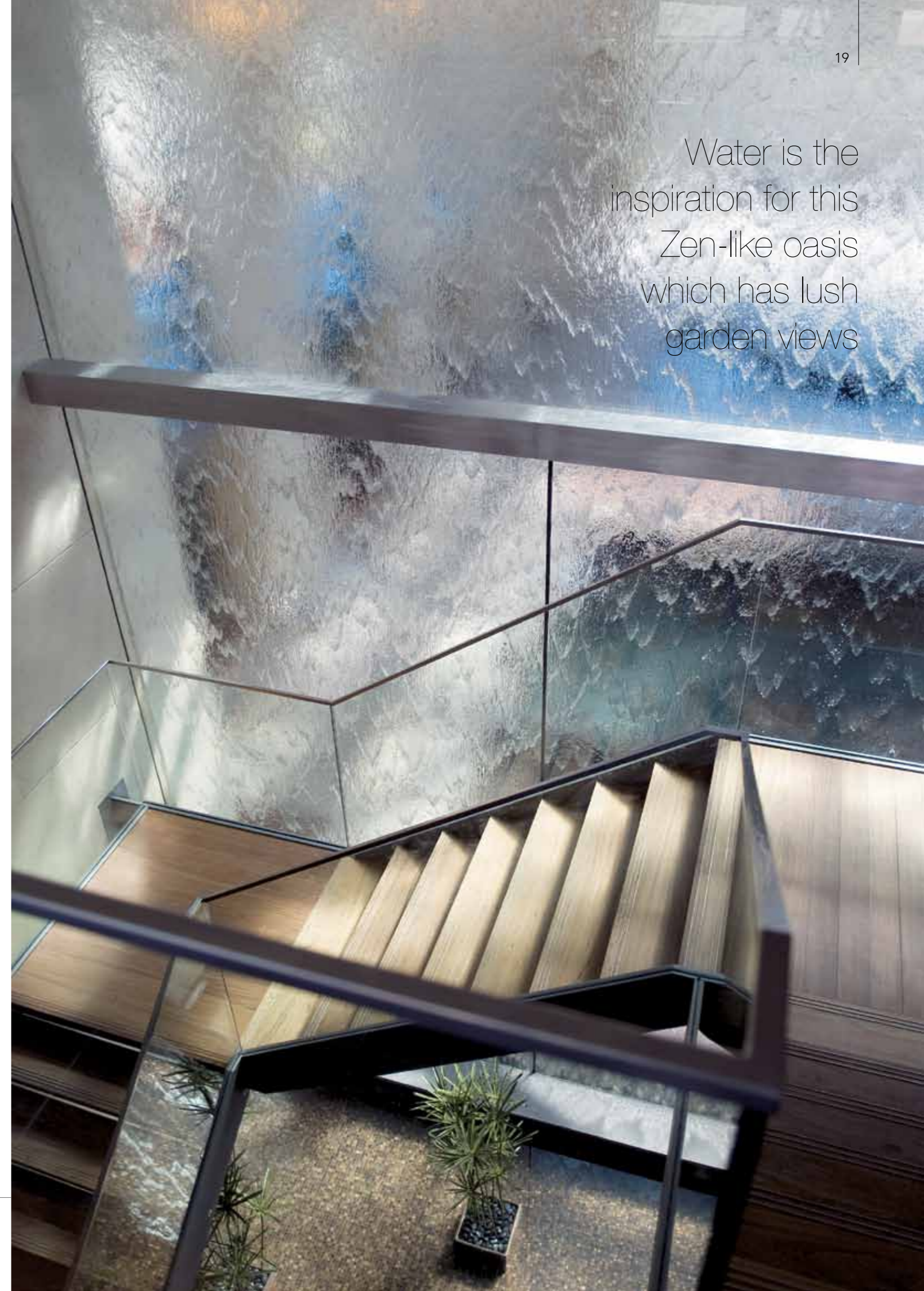
To work closely with the architects, PGA, and Hilton Hotels to design and build a 5 star spa for this multi-award winning hotel in Vilamoura, Algarve, Portugal.

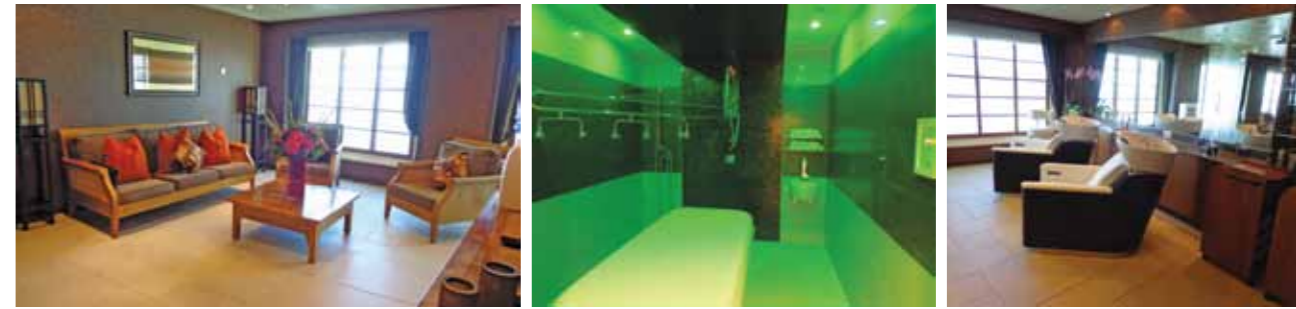
WHAT WE DID

- ◆ Partnering with the architects, we provided spa development expertise for the 2,800 m² project.
- ◆ We also supplied and installed all technical equipment for the thermal garden, hydro pools, sauna, aromatic Turkish Bath, ice fountain, water tunnel experience, and waterfall showers. Facilities include a VIP suite and 12 treatment rooms.
- ◆ Pre opening, our consultants provided staff training.

THE RESULTS

- ◆ 7 Spa, Portugal's largest spa, is a truly 5 star, international experience. With innovative treatment areas, it includes some of the most advanced spa technology on the Iberian Peninsula.





CASE STUDY

The World Residence

THE BRIEF

We were asked to refurbish the spa on the world's most luxurious private residential ocean liner. Both the schedule and the space to work within were tight. And we needed to comply with a high level of industry regulations. Including safety standards.

WHAT WE DID

There were two phases of intervention, both with tight time frames:

- ◆ First, we followed *The World* around the globe while we refurbished certain areas of the spa
- ◆ Second, we refitted all the treatment rooms, the reception, and the corridors while the liner was in dry dock

THE RESULTS

- ◆ An elegant, refined spa that now matches the level of sophistication offered by this exclusive ship.
- ◆ Our spa design complies with all safety and shipping industry standards.





CASE STUDY

Mövenpick Sousse

THE BRIEF

Designed by international architects in Paris, we were asked to provide consultancy services and specialised spa equipment. This 5,000 m² marine spa sits next to the white sands of Sousse, in Tunisia.

WHAT WE DID

- ◆ We provided guidance and technical expertise to the architects. Adding value to the overall design.
- ◆ We also supplied and installed all specialised equipment. This included a Thalasso spa, with sea water pumped in, heated, and used in all thermal areas. And in the private indoor pool.
- ◆ Facilities also include 12 treatment rooms and a typical hamam. Wet treatments are what you would expect to find in only the world's best Thalasso spas. And the hamam gives clients an authentic north African experience.

THE RESULTS

- ◆ Spa guests love to swim from the inside to the outside and be under the stars. The indoor pool has possibly the most sophisticated system of hydraulic equipment and animation.





Vila Joya Spa sits on the picturesque Atlantic coast



CASE STUDY

Vila Joya

THE BRIEF

To work with the owners and interior designers to create a unique spa for Europe's leading boutique hotel (World Travel Awards Winner 2015). We were also asked to supply and install specialised equipment.

WHAT WE DID

- ◆ We helped to create an oasis for relaxation and regeneration, focusing on water, air, and light. Facilities include a double treatment room, floating over a golden river; a multi-purpose room; a sauna; a hammam; two multi-sensory showers; an outdoor whirlpool; and a cardiovascular gym area.
- ◆ Our team worked very closely with the owners to develop a jewel in the crown.
- ◆ We specified, supplied and installed specialised equipment for this 540 m² project

THE RESULTS

- ◆ Vila Joya Hotel & Spa, Portugal, was voted Europe's Leading Boutique Hotel in the World Travel Awards in 2011, 2012, 2013, 2014 and 2015.



CASE STUDY

Virgin Porto

THE BRIEF

We were invited to develop the concept for a spa that would be attached to a Virgin Active gym. The idea is that gym users can relax and revitalise after an intensive workout. The first Virgin Active Health Club in Portugal, we also installed all spa equipment.

WHAT WE DID

- ◆ We designed the sauna using an amphitheatre shape. This allows up to 18 bathers to use the cabin. The largest steam cabin in Portugal, we created an inverted pyramid ceiling as a solution to height restrictions.
- ◆ We also created a comfortable, ergonomically designed hydro pool with massage treatments. And a relaxation area.
- ◆ In addition, we developed a Virgin Rain shower temple. With alternating light warm and cold drizzle. Mint aroma is pumped into the shower during cold cycles.

THE RESULTS

- ◆ An incredibly positive response from gym users. Despite the fact that the spa and gym environments are opposite in nature.



A divine retreat
for rejuvenating
vinetherapy



CASE STUDY

Vine Hotel

THE BRIEF

To work closely with the owners and interior designers, Nini Andrade Silva, to create a luxurious spa for this multi-award winning hotel in Madeira.

WHAT WE DID

- ◆ We provided a full design and consultancy service, supplying and installing specialised spa equipment. Specialising in Vinetherapy, The Vine Spa concept is unique to Madeira.
- ◆ We developed an astounding thermal area and relaxation space for this 800 m² project
- ◆ The couples' treatment room boasts a large "Bain Baroque" where couples can relax in hot water and soak up an atmosphere of pure indulgence.

THE RESULTS

- ◆ The Vine Hotel was voted Europe's Leading Design Hotel in the World Travel Awards in 2013, 2014, and 2015.
- ◆ The spa, roof terrace pool, and relaxation area provide a wide selection of treatments and experiences for guests. Despite Funchal's tight city centre confines.



CASE STUDY

Vale do Lobo

THE BRIEF

To act as consultants to the architect, Vasco Vieira, and to supply specialised spa equipment for this luxury resort in the Algarve, Portugal.

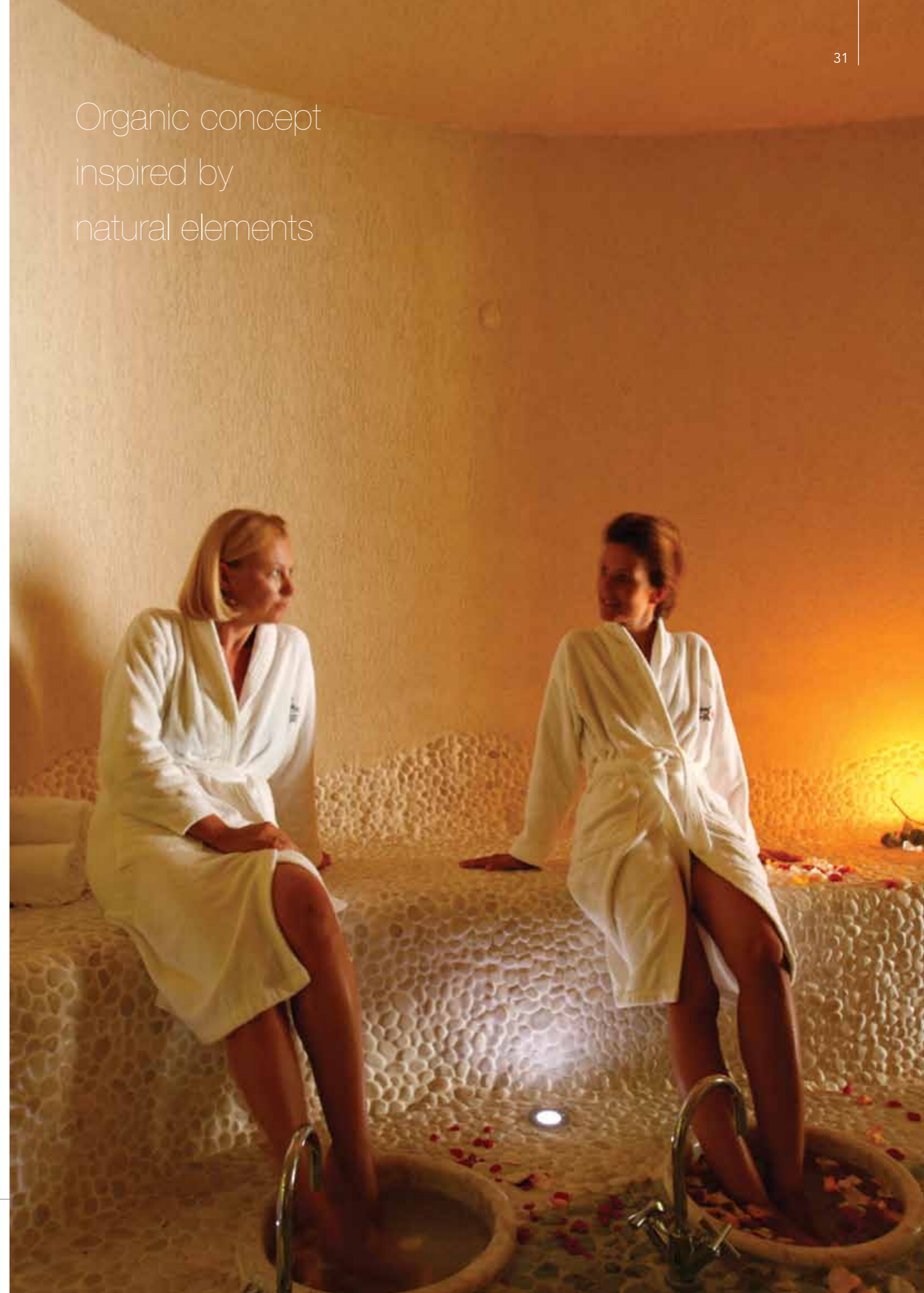
WHAT WE DID

- ◆ We provided guidance and technical expertise to the architect for this 2,200 m² project.
- ◆ We also supplied and installed specialised equipment. This included a hammam; male and female saunas; showers, hydro bath, footbath and cocoon area for the treatment rooms; a Vichy shower; an indoor swimming pool with air beds; and a whirlpool and water cannons.

THE RESULTS

- ◆ Local salt mines inspired the design of this Royal Spa. The cavern's rock salt being known for its health benefits. The organic design is also influenced by nature and incorporates elements such as wood, stone, plants, and water.

Organic concept
inspired by
natural elements





CASE STUDY

Estoril Palace Spa

THE BRIEF

We were asked to provide the heat experiences and specialised equipment for the Banyan Tree Spa at the 5 star Hotel Palácio Estoril, near Lisbon. The impressive stand-alone spa houses the Banyan Tree medical spa and a traditional spa in one building.

Hotel Palácio Estoril and Estoril Casino were the inspiration for Ian Fleming's first James Bond story, Casino Royal.

WHAT WE DID

- ◆ Working with the project designers, Palmer & Grego Architects, we provided the heat experiences and specialised equipment for the thermal area and VIP Suite bathing area.

THE RESULTS

- ◆ The Banyan Tree Spa won Best Spa in The World Luxury Hotel Awards in 2015.





CASE STUDY

Gulf Hotel

THE BRIEF

Design a new 3,500 m² spa in accordance with local culture and with exclusive areas for males and females. We are responsible for concept and design all the way through to installation.

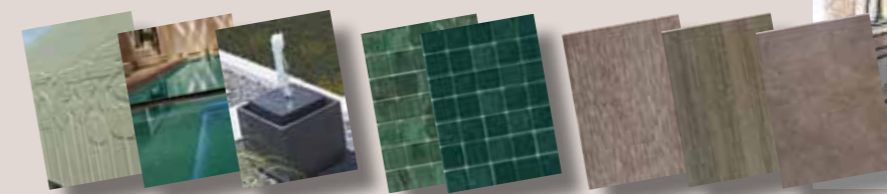
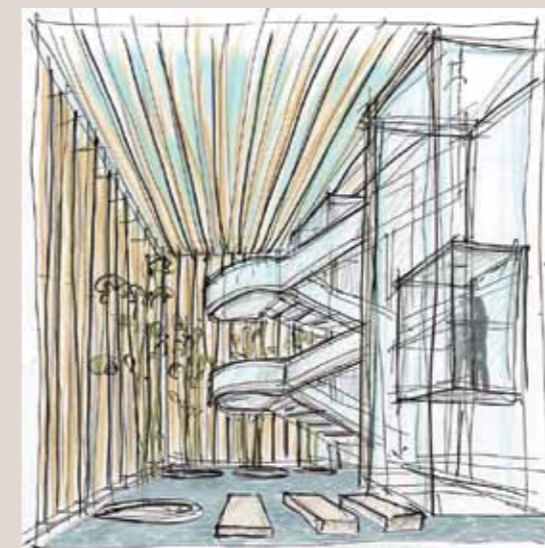
WHAT WE DID

- ◆ We created a purposely designed technical room accessible from the spa's exterior. This allows maintenance work to be done without disturbing guests.
- ◆ There are very large, well equipped heat experience areas. Each has a sauna, hammam, hydro pool, and relaxation pool. Three theme showers and an ice fountain also feature.
- ◆ The spa is designed so that all equipment can be remotely monitored from our offices in Portugal. We can alert the maintenance manager if problems occur. The spa manager can monitor equipment from both receptions.
- ◆ The roof garden's water features and sounds are reminiscent of the Alhambra. There, clients can revitalise in a refreshing, cold shower.

THE RESULTS

- ◆ The spa was being completed when this brochure was produced.

ASPA: email letstalk@a-spa.com, telephone +351 919 899 942





our services

With over 30 years' luxury spa development and operational experience, we offer a comprehensive range of services. Our team works with hotel operators, architects, interior designers, developers, and corporate spa directors.

- ◆ Consultancy: market suitability and financial feasibility
- ◆ Concept and design development including spa layout, detailed M&E drawings, and equipment specification
- ◆ Equipment supply and installation
- ◆ Pre-opening services such as marketing, menu creation, spa programs, stocking of equipment, recruitment, and training
- ◆ Preventative maintenance
- ◆ Post-opening services including reviews, audits, and training

[To request more information about ASPA click here](#)

ASPA

PORTUGAL

Estrada Vale Lobo, Escanxinas
8135-016 Almancil, Algarve

Telephone (+351) 919 899 942

Email letstalk@a-spa.com

www.a-spa.com

Spa consultancy | Spa design & equipment supply | Preventative maintenance

SINCE 1983